



Jalousie Modell Lift 25 mm
 Jalousie Modèle Lift 25 mm

Montage zwischen den Glasleisten mit Klebeleisten
 Pose entre les parecloses avec des plinthes adhésives

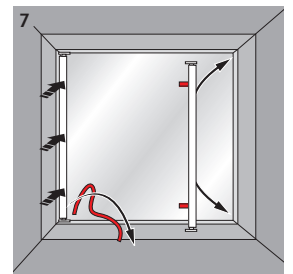
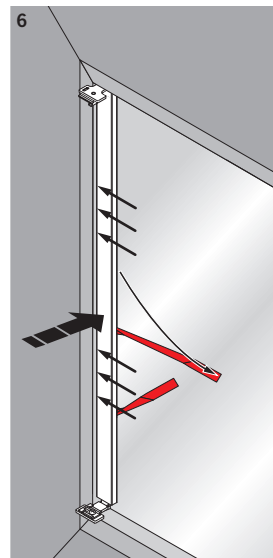
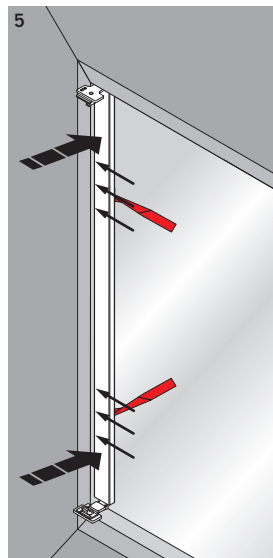
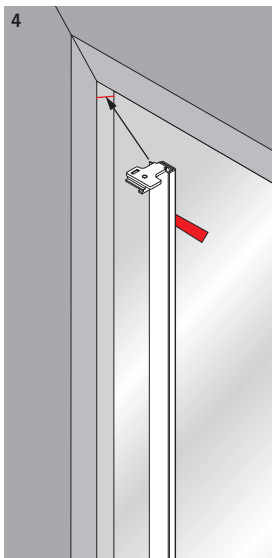
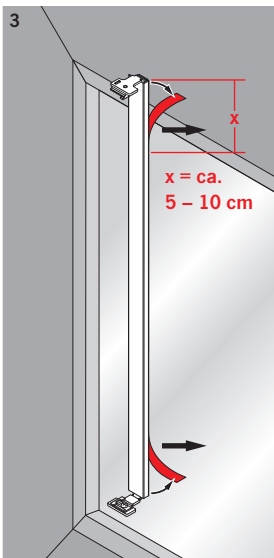
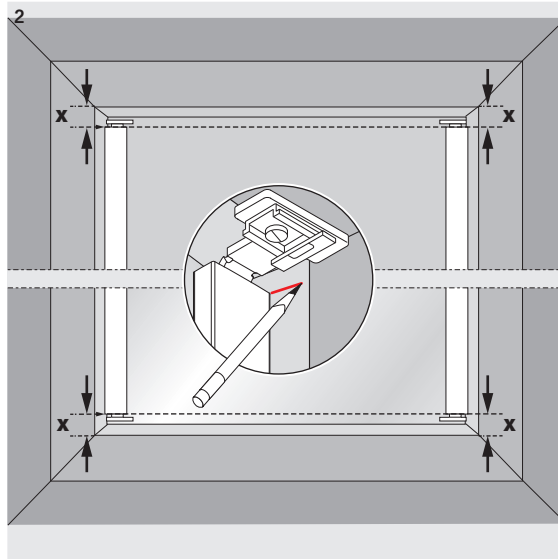
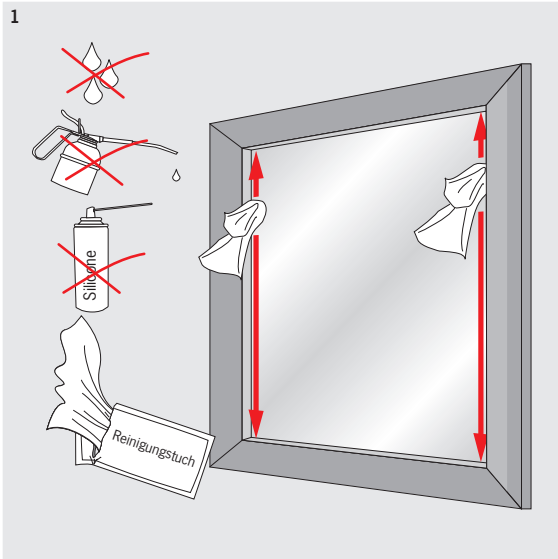
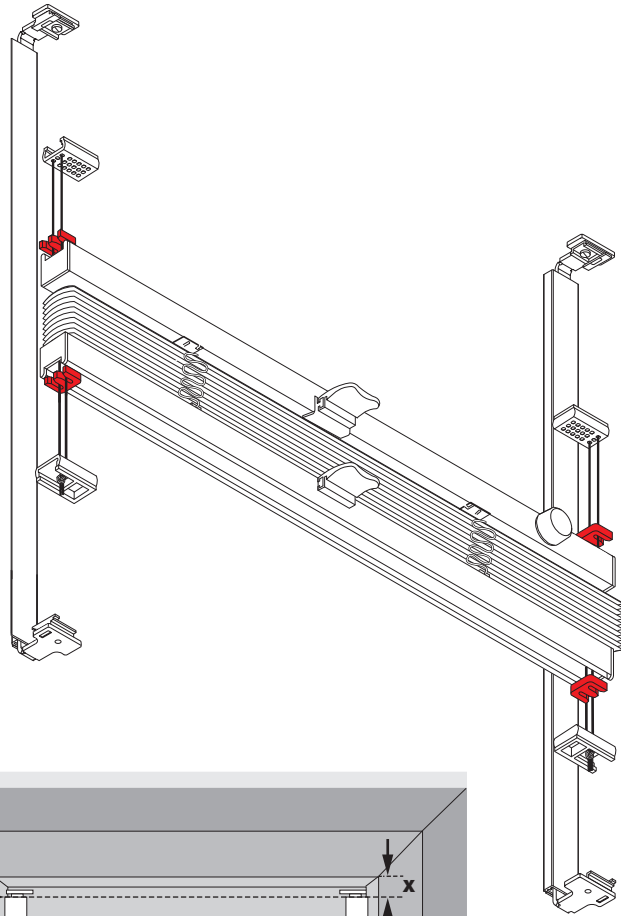
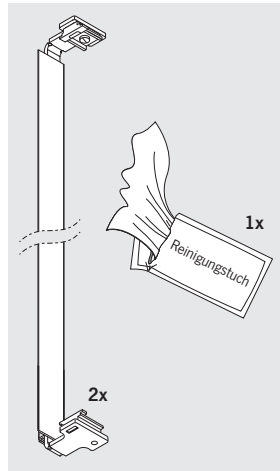
Teba[®]
 Fensterdekoration

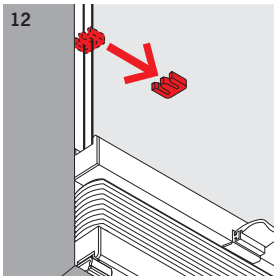
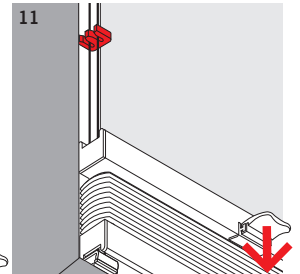
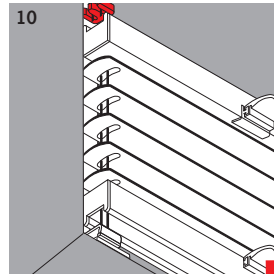
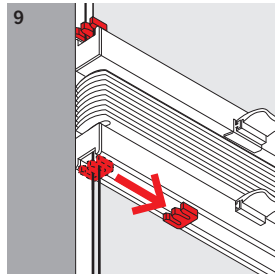
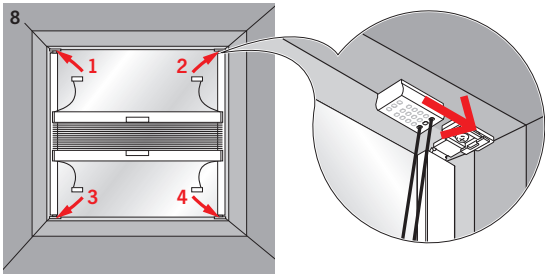
Montagezubehör

Das beiliegende Befestigungsmaterial gilt nur für feste Untergründe. Für die Montage haftet der Montierende.

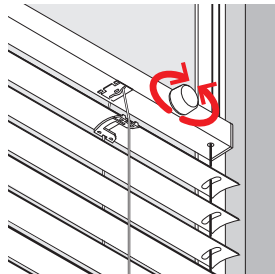
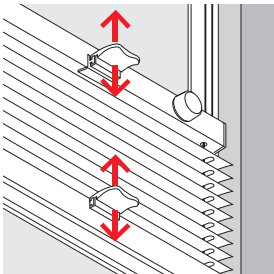
Accessoires de montage

Le matériel de fixation joint ne peut être appliqué que sur des bases solides. La personne chargée du montage est responsable du montage.





Bedienung
Commande



Demontage
Démontage

